

# Alaska Department of Fish and Game

Habitat Section  
Southeast Region



## 105-32-10190 Tributary 6

## ADDITION

**Waterbody name:**

**Quad:** Petersburg D-6

**Upper Reach Latitude:** 56.855151 **Longitude:** - 133.656305

**Lower Reach Latitude:** 56.854490 **Longitude:** - 133.659873

**Survey date:** 6/7/2023

**Species & Lifestage:**

**Survey crew:** FC, CD, GA

**Findings:** We surveyed this uncataloged stream using minnow traps baited with disinfected salmon eggs, a backpack electrofisher, and GPS and captured juvenile coho salmon and Dolly Varden (Figure 1). The stream starts in a wetland then moves into a forested upland, with spawning gravel and sand throughout (Table 1; Figures 2, 3).

**Recommendations:** Add this uncataloged stream to the anadromous waters catalog for rearing coho salmon (Figure 4).

**Nomination:** Pending

Table 1.—105-32-10190 tributary 6 survey data.

Waypoint	Latitude	Longitude	Notes	Stream Width ft	Stream Substrate	Habitat Features	Gradient %	Sample Effort	Sample Results
154	56.854752	-133.659424	2 minnow traps soaked overnight upstream and downstream of 3' wide pipe arch CSP. Bottom of inlet rusted out; outlet spills onto small pile of rip rap. Downstream fish capture: 4 CO; upstream: 2 CO, 1 DV.	4-6	Small Gravel Large Gravel		1-2	MT	6 CO 1 DV
219	56.854917	-133.659139	Continuing survey via electrofishing. Young-of-year CO capture.	2-4	Small Gravel Sand		2-4	EF	2 CO
220	56.854966	-133.658894						EF	2 CO
221	56.855114	-133.658225						EF	2 CO
222	56.855199	-133.657558						EF	2 CO 3 DV
223	56.855119	-133.657144						EF	2 CO
224	56.855156	-133.656325					8-10	EF	2 CO
225	56.855121	-133.655988	Gradient increase compared to downstream. A few 2-3' falls of over debris jams and bedrock. Resident fish capture only since last waypoint.			Incised Channel	10-12	EF	3 DV



Figure 1.—Juvenile coho salmon captured at waypoint 154.



Figure 2.—Channel at waypoint 154 facing downstream.



Figure 3.— Channel at waypoint 222 facing upstream.



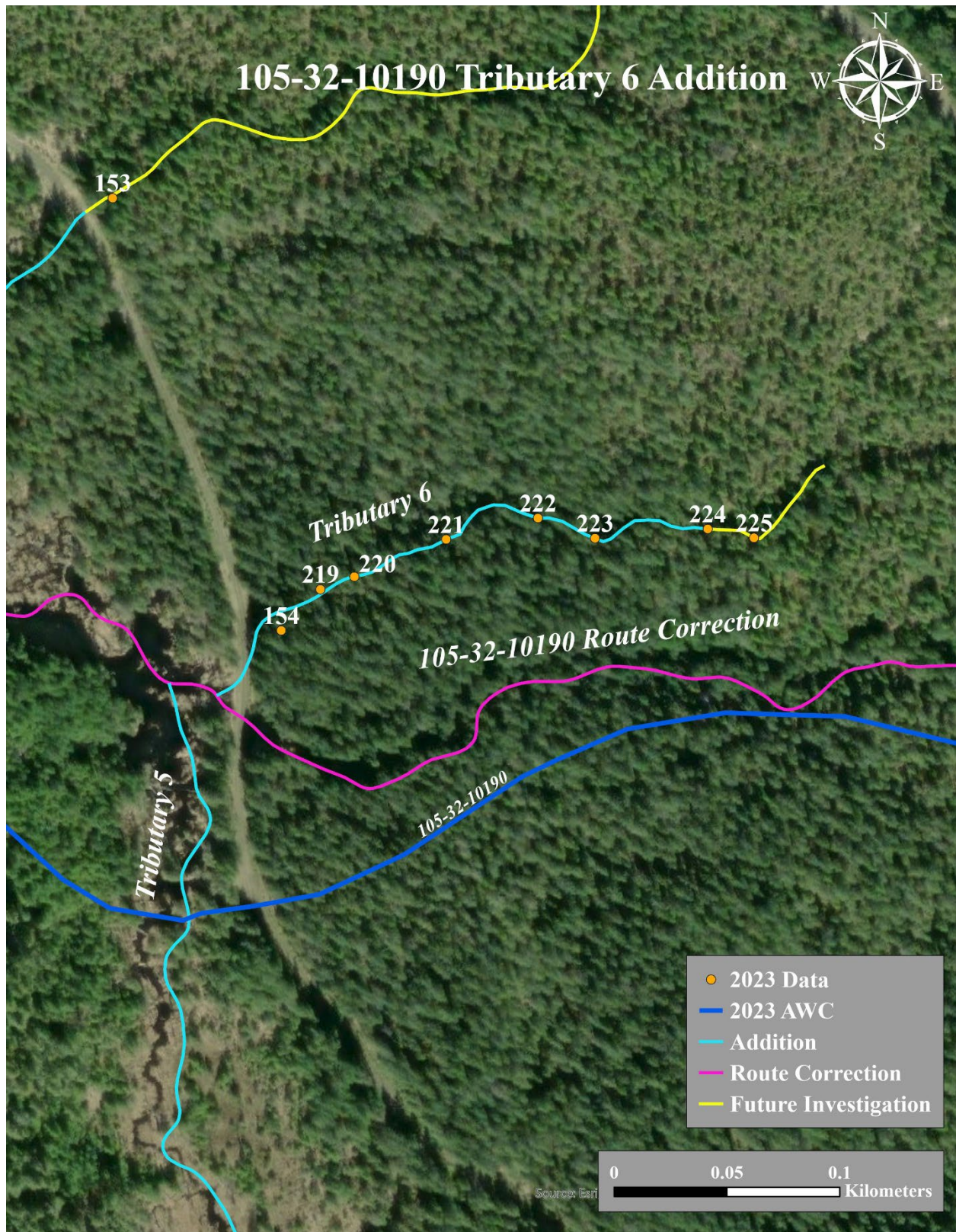


Figure 4.—105-32-10190 tributary 6 addition map.